



# News Letter

May 04, 2020

**Airport information included in our newsletter covers:  
RJTT / RJAA / RJBB / RJCC / RJGG/ RJNA**

## COVID-19 Information in JAPAN

The COVID-19 restriction in Japan has been updated on **29APR** and this will be in effect until end of May. Under a declaration of state of emergency, all the JAS staff is currently working carefully as much as possible to avoid any risk of getting the disease, yet we will make sure it won't affect our daily operations. We will keep you updated the information as needed.

### Designated Areas Subject to Entry Denial

Designated Areas Subject to Entry Denial	
Asia	Indonesia, Republic of Korea, Singapore, Thailand, Taiwan, China(including Hong Kong and Macau), Philippines, Brunei, Viet Nam, Malaysia
Oceania	Australia, New Zealand
North America	Canada, United States of America
Latin America and the Caribbean	<b>Antigua and Barbuda</b> , Ecuador, <b>Saint Christopher and Nevis</b> , Chile, Dominica, <b>Dominican Republic</b> , Panama, <b>Barbados</b> , Brazil, <b>Republic of Peru</b> , Bolivia
Europe	Iceland, Ireland, Albania, Armenia, Andorra, Italy, <b>Ukraine</b> , the United Kingdom, Estonia, Austria, Netherlands, North Macedonia, Cyprus, Greece, Croatia, Kosovo, San Marino, Switzerland, Sweden, Spain, Slovakia, Slovenia, Serbia, Czech Republic, Denmark, Germany, Norway, Vatican, Hungary, Finland, France, Bulgaria, <b>Republic of Belarus</b> , Belgium, Bosnia and Herzegovina, Poland, Portugal, Malta, Monaco, Moldova, Montenegro, Latvia, Lithuania, Liechtenstein, Romania, Luxembourg, <b>Russian Federation</b>
Middle East	<b>United Arab Emirates</b> , Israel, Iran, <b>Sultanate of Oman</b> , <b>State of Qatar</b> , <b>State of Kuwait</b> , <b>Kingdom of Saudi Arabia</b> , Turkey, Bahrain
Africa	Egypt, Côte d'Ivoire, Democratic Republic of the Congo, <b>Republic of Djibouti</b> , Mauritius, Morocco

(\*1) The countries and regions which written in red are newly added to the regulation areas this time

For further more information, please visit below Ministry of Foreign Affairs of Japan website.

[https://www.mofa.go.jp/ca/fna/page4e\\_001053.html](https://www.mofa.go.jp/ca/fna/page4e_001053.html)

Also the attached diagram may be useful to understand the general outline about restrictions and the procedures for entry.

*We hope that you and your employees and your family stay safe and healthy. We will all get through this!*

### **MONTHLY SLOT RELEASE SCHEDULE (RJTT/RJCC/RJAA/RJBB)**

<b>Monthly Slot Release Schedule for JUN 2020</b>			
	<b>RJTT / RJCC</b>	<b>RJAA</b>	<b>RJBB</b>
<b>Applicable Operation Dates</b>	<b>01JUN – 30JUN, 2020</b>	<b>07JUN – 30JUN, 2020</b>	<b>01JUN – 30JUN, 2020</b>
<b>Monthly Application Deadline</b>	<b>08MAY 0730Z (1630L)</b>	<b>07MAY 0730Z (1630L)</b>	<b>10MAY 0730Z (1630L)</b>
<b>Daily Application Starts at</b>	<b>20MAY 0800Z (1700L)</b>	<b>15MAY 0800Z (1700L)</b>	<b>20MAY 0800Z (1700L)</b>

(L=JST)

\*Slots for today through 31MAY2020 may be applied for on a daily basis for RJTT and RJCC.

\*Slots for today through 06JUN2020 may be applied for on a daily basis for RJAA.

\*Slots for today through 3MAY2020 may be applied for on a daily basis for RJBB.

#### **RJTT (Haneda)**

**The most popular Tokyo-area airport, near downtown Tokyo**

**Hard to get slots and parking spots**

**Operational Hours: 24hrs**

**CIQ Hours: 24hrs**

**Parking Restriction: 4nights/5days at a maximum**

**Business Aviation Terminal: Available (260,000JPY + TAX per ARR or DEP)**

**■Only passengers can use this facility. Crew need to clear CIQ in the main terminal**

#### **RJAA (Narita)**

**Another airport in Tokyo-area (only 60-70 min to downtown Tokyo)**

**Advantages of using RJAA**

- **Easier to get slots/parking spots (the number of available spots for GA aircraft: 16)**
- **Longer duration parking allowance (up to 30days)**
- **Hanger is available for parking**
- **Sufficient ground service availability including providing O<sub>2</sub> and N<sub>2</sub> etc...**

**Operational Hours: 0600L – 2259L (2100Z - 1359Z)**

**CIQ Hours: 0600L – 2300L (2100Z - 1400Z)**

**Parking Restriction: 29nights/30days at a maximum**

**Business Aviation Terminal: Available (250,000JPY + TAX per ARR or DEP)**

**■Both passengers and crew can use this facility**

**RJCC (New Chitose)**

**The gateway to the Northern part of Japan  
Overnight parking is available from 01APR to 30NOV**

**Chinese, including Hong Kong and Macau based operators are NOT able to operate/park overnight at RJCC except during the following hours.**

**Mondays – Thursdays : Between 1200L and 1659L (0300Z and 0759Z)**

**Fridays : Between 1200L and 2159L (0300Z and 1259Z)**

**Saturdays : Between 0700L and 2159L(2200Z and 1259Z)**

**Sundays : Between 0700L and 2159L(2200Z and 1259Z)**

**\*The same restriction applies to operators based in and aircraft registered in the following countries: Russia, India, Vietnam, Iran, Iraq, Syria, Libya, Cuba, Ukraine, North Korea.**

**Operational Hours: 0700L – 2200L (2200Z – 1300Z)**

**CIQ Hours:**

**Customs: 0630L – 2200L Service after 2200L needs to be arranged in advance**

**Immigration: 0630L – 2200L Service after 2200L needs to be arranged in advance**

**Quarantine: 24hrs, but advance notice is required**

**Curfew Time: 2200L – 0700L (1300Z – 2200Z)**

**Parking Restriction: 6nights/7days at a maximum**

**Business Aviation Terminal: NOT Available**

**RJBB (Kansai)**

**Good access to Osaka, Kyoto, and the Kobe Area**

**Operational Hours: 24hrs**

**CIQ Hours: 24hrs**

**Parking Restriction: None, but aircraft may not be able to stay at the same spot from arrival through departure if it parks for a long period. Aircraft may be required to move to an overnight parking spot. Towing service is not available**

**Business Aviation Jet Terminal: Available (200,000JPY + TAX per ARR or DEP)**

■ Crew will be able to use this facility only if they clear CIQ at the same time as passengers do, otherwise the crew need to clear CIQ at the main terminal. In the main terminal, a Fast Lane is available at immigration for **ONLY ARRIVAL** passengers. The service is not extended to customs. Also, Japanese passport holders cannot use this service.

### **RJGG (Chubu Centrair)**

**Easy to get slots and parking spots, good service availability**

**Slot Application: Slots can be applied for anytime, but their availability will be released at the end of each month for the next month's operations.**

**Operational Hours: 24hrs**

**CIQ Hours: 24hrs**

**Parking Restriction: None, but aircraft may not be able to stay at the same spot from arrival through departure if it parks for a long period. Aircraft may be required to move to an overnight parking spot.**

**Business Aviation Terminal: Available (Free of charge), but advanced coordination with CIQ is required.**

### **RJNA (Nagoya Komaki)**

**A Nagoya-area airport closer to downtown than RJGG**

**Easy access to aircraft through a dedicated business jet terminal**

**RJNA is run by Aichi prefecture and is NOT an Airport of Entry. However, it is the first airport with a dedicated BJ Terminal in Japan. International arrivals/departures can be arranged. Located in the north, RJNA offers fast access from/to Nagoya (15~20 min by car). Aircraft parking is a short distance from/to the BJ terminal (70m/230ft).**

**Slot Application: No advance booking of slots is required. However, a parking spot should be reserved in advance. Parking spots for the next month can be secured from the first day of this month.**

**Operational Hours: 0700L – 2200L (2200Z – 1300Z)**

**CIQ Hours: Advanced coordination is required as CIQ is not regularly stationed here. CIQ officers come to the airport based on request. 3 days advanced notice is required.**

**Parking Restriction: 6nights/7days (extension can be granted)**

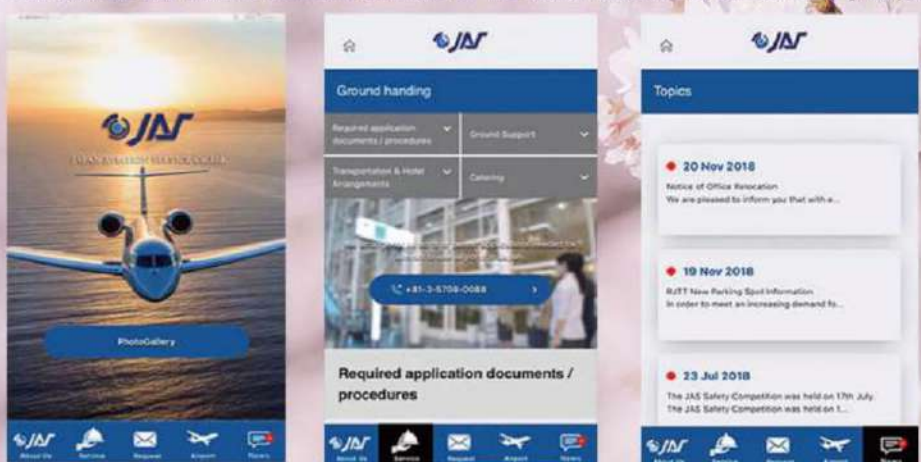
**Business Aviation Terminal: GA operations are required to use this facility. (14,940JPY per hour) CIQ is not available in the main terminal.**

**Permit application to use RJNA for international operations must be submitted 3 days prior to the operation date. A trip needs to be planned well in advance.**


## JAS APP

**INTRODUCTION OF APPLICATION**


- THIS APPLICATION IS PROVIDED BY JAPAN AVIATION SERVICE WHICH PROVIDES GROUND HANDLING SERVICES FOR BUSINESS JETS.
- YOU CAN SEE OUR GROUND HANDLING SERVICES AT THE MAJOR AIRPORTS IN JAPAN. ALSO, YOU CAN BOOK CHARTERS.



**Download on the App Store**



**GET IT ON Google Play**



**NOTIFICATION** Updated information will be noticed by push notification.

**PHOTO GALLERY** You can see the interior and services in aircraft by pictures.

**RESERVATION FUNCTION** You can make charter of jets and helicopters charter reservation, and you can request us ground handling services.

**AIRPORT INFORMATION** Please take a look at our providing ground handling services in the major airports in Japan.

**It is our pleasure to serve you.**

TEL : +81-(0)3-5708-0088 / FAX : +81-(0)3-5708-0090

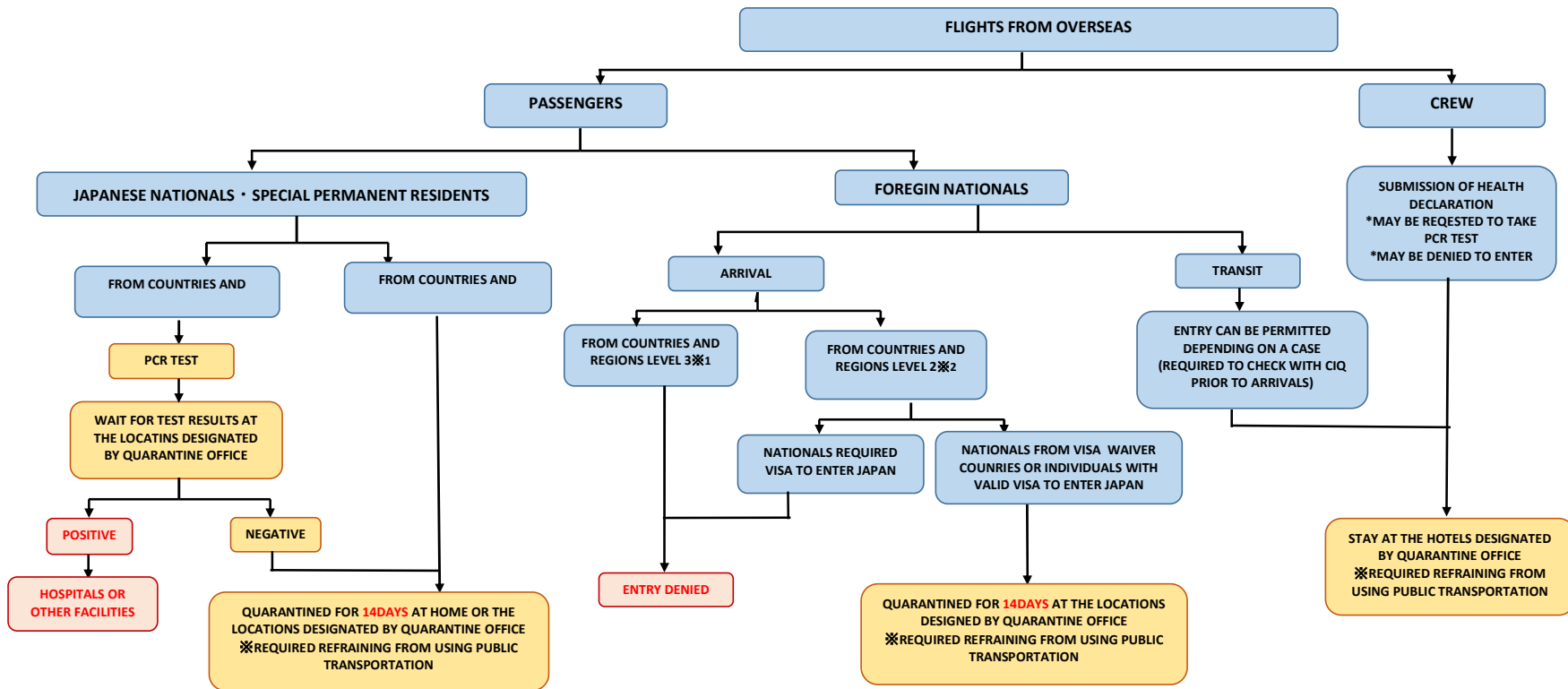
Email : [flightsupport@jas-fbo.co.jp](mailto:flightsupport@jas-fbo.co.jp)

Web site : <https://www.jas-fbo.co.jp/english/index.html>

*See you next time!!*



**ENTRY RESTRICTIONS (AS OF 5/4) - RJCC, RJAA, RJTT, RJBB ONLY / the flow may be different at the other airports -**  
**\*Restrictions is changing on a daily basis. Please ask us for accurate information for each flight**



(※1) COUNTRIES AND REGIONS SUBJECT TO ENTRY RESTRICTIONS BASED ON IMMIGRATION CONTROL AND REFUGEE RECOGNITION ACT (MOFA TRAVEL ADVISORY LEVEL3)

ASIA: Indonesia, Republic of Korea, Singapore, Thailand, Taiwan, China(including Hong Kong and Macau), Philippines, Brunei, Viet Nam, Malaysia

OCEANIA: Australia, New Zealand

NORTH AMERICA: Canada, United States of America

LATIN AMERICA AND CARIBBEAN: Antigua and Barbuda, Ecuador, Saint Christopher and Nevis, Chile, Dominica, Dominican Republic, Panama, Barbados, Brazil, Republic of Peru, Bolivia

EUROPE: Iceland, Ireland, Albania, Armenia, Andorra, Italy, Ukraine, the United Kingdom, Estonia, Austria, Netherlands, North Macedonia, Cyprus, Greece, Croatia, Kosovo, San Marino, Switzerland, Sweden, Spain, Slovakia, Slovenia, Serbia, Czech Republic, Denmark, Germany, Norway, Vatican, Hungary, Finland, France, Bulgaria, Republic of Belarus, Belgium, Bosnia and Herzegovina, Poland, Portugal, Malta, Monaco, Moldova, Montenegro, Latvia, Lithuania, Liechtenstein, Romania, Luxembourg, Russian Federation

MIDDLE EAST: United Arab Emirates, Israel, Iran, Sultanate of Oman, State of Qatar, State of Kuwait, Kingdom of Saudi Arabia, Turkey, Bahrain

AFRICA: Egypt, Côte d'Ivoire, Democratic Republic of the Congo, Republic of Djibouti, Mauritius, Morocco

(※2) ALL COUNTRIES AND REGIONS EXCEPT LISTED THE ABOVE = (※1)